



Llangewydd Junior School

Headteacher: Mr N Clode; Deputy Headteacher: Mrs L Evans; Assistant Headteacher: Mr D Evans;
ALNCo. : Mrs T Porter; Other senior leadership team members: Mrs J Davies & Mrs W Mitchell

Monday, July 3rd 2023

Annwyl Rieni/Gwarchodwyr,
Dear Parents/Carers

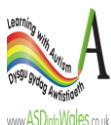
Arrangements for September 2023

- Please refer to the attached map.
- All pupils will return to school on Wednesday September 6th.
- As a general rule, pupils will not be allowed on school premises before the start of the school day.
- We hope to continue with after school clubs from the week commencing 25th September.
- **Breakfast club** will commence for all pupils from Wednesday September 6th. Pupils must arrive at entrance 'A' and the gate will open at 8.15am and close at 8.30am. You do not need to pre-register for this facility.

Year 3 mainstream

- Please only use entrance 'A'. Year 3 pupils are allowed into the school from 9.00am until 9.10am through entrance 'A'. Prior to this (between 8.50am and 9.00am this entrance is only to be used by year 5 pupils and so year 3 pupils have to wait at the gate if they arrive before 9.00am).
- For the first three days (from September 6th to the 8th) parents and carers must accompany their child onto the yard opposite the main block (you will be directed) during these times.
- Teachers will come out onto this yard to meet pupils during this first week and pupils should know who their class teacher is. There will be plenty of staff on hand to ensure this process runs smoothly.
- At the end of the day, year 3 pupils will leave at 3.35pm - parents should collect their children from the yard for these three days. From Monday September 11th the decision as to whether to meet your child will be yours but pupils will only be 'handed over' during their first three days with us (after the first week some pupils will walk home independently, some children will be met on the yard and some children will be met at entrance 'A').
- At the end of the day parents of year 3 pupils will not be allowed onto the yard before the last of our year 5 pupils have left, which is usually around 3.30pm (please note that all other year groups finish at 3.25pm)

Year 4 mainstream



Llangewydd Junior School, Llangewydd Road, Bridgend, South Wales UK CF31 4JT
Tel: 01656 815530. admin.llangewydd@bridgend.gov.uk. www.llangewydd.co.uk



Llangewydd Junior School

Headteacher: Mr N Clode; Deputy Headteacher: Mrs L Evans; Assistant Headteacher: Mr D Evans;
ALNCo. : Mrs T Porter; Other senior leadership team members: Mrs J Davies & Mrs W Mitchell

- Year 4 pupils will be able to enter the school between 8.50am and 9.00am. The ideal time to arrive is 8.55am. They must **only use the pedestrian entrance from Llangewydd Road- entrance 'C'**. Year 4 are the only year group who are allowed to enter and exit this way. Even if you live on Heol Y Frenhines, or on the Heol Y Frenhines side of the school, your child must enter through the Llangewydd Road entrance (pupils will be redirected to this entrance if they present at the Heol Y Frenhines entrance). Pupils will not be handed over from school to parents at the end of the school day, they will instead appear from the Llangewydd Road entrance from 3.25pm.

Year 5 mainstream

- They will be able to enter the school between 8.50am and 9.00am. The ideal time to arrive is 8.55am. They should **only use the main pedestrian entrance from Heol Y Frenhines - entrance 'A'**. Year 5 share this entrance and exit with year 3 who will be admitted ten minutes later in the morning and leave ten minutes later in the afternoon. Even if you live on Llangewydd Road, or on the Llangewydd Road side of the school, your child must enter through the Heol Y Frenhines entrance (pupils will be redirected to this entrance if they present at the Llangewydd Road entrance). Pupils will not be handed over from school to parents at the end of the school day, they will instead appear from the Heol Y Frenhines entrance from 3.25pm.

Year 6 mainstream

- They will be able to enter the school between 8.50am and 9.00am. The ideal time to arrive is 8.55am. They should **only use the 'lower' pedestrian entrance from Heol Y Frenhines - entrance 'B', not the main Heol Y Frenhines entrance**. As stated above, even if you live on Llangewydd Road, or on the Llangewydd Road side of the school, your child must enter through this 'lower' Heol Y Frenhines entrance (pupils will be redirected to this entrance if they present elsewhere). Pupils will not be handed over from school to parents at the end of the school day, they will instead appear from the 'lower' Heol Y Frenhines entrance from 3.25pm.

Base Pupils

- In the mornings, base pupils not travelling by taxi, should arrive in school from 9.00am to 9.10am (please do not arrive before this as y6 will be entering through the same entrance just before your arrival- the ideal arrival time is 9.05am). Pupils will be met and greeted at the gate by staff from the base. School will finish for base pupils at 3.10pm at which time pupils will be brought to the lower gate - entrance 'B'.

Other Matters

- As previously advised, we expect pupils to attend school in appropriate school uniform.
- We must have up to date contact details for all parents and carers at all times.
- All newsletters and news will be posted on the school website. The school 'App' is immediately updated when a newsletter is issued or a news post made. Details of how to download the 'App'





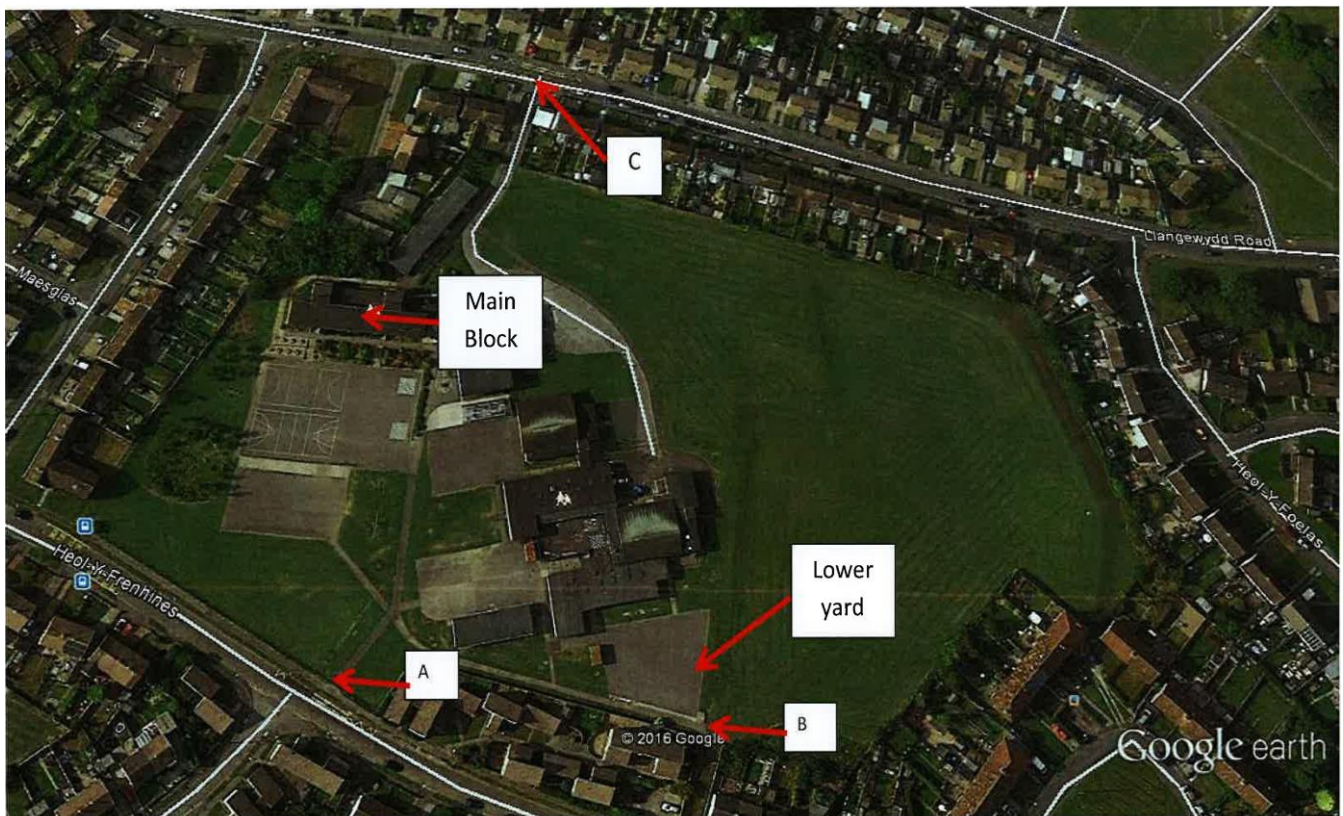
Llangewydd Junior School

Headteacher: Mr N Clode; Deputy Headteacher: Mrs L Evans; Assistant Headteacher: Mr D Evans;
ALNCo. : Mrs T Porter; Other senior leadership team members: Mrs J Davies & Mrs W Mitchell

can be found on our website.

- Please provide your child with a refillable water bottle.
- Lunch times and break times will be staggered. Years 3 and 5 will share breaks and lunches together, whereas years 4 and 6 will share theirs.
- PE kit - your child's class teacher will inform you what kit your child should bring to school and when. We will not operate a policy of bringing PE kit in on a Monday and taking it home for washing on a Friday (as we have in the past). PE kit will need to be brought in and taken home the same day but pupils should not come to school in their PE kit.

Neil Clode



Llangewydd Junior School, Llangewydd Road, Bridgend, South Wales UK CF31 4JT
Tel: 01656 815530. admin.llangewydd@bridgend.gov.uk. www.llangewydd.co.uk